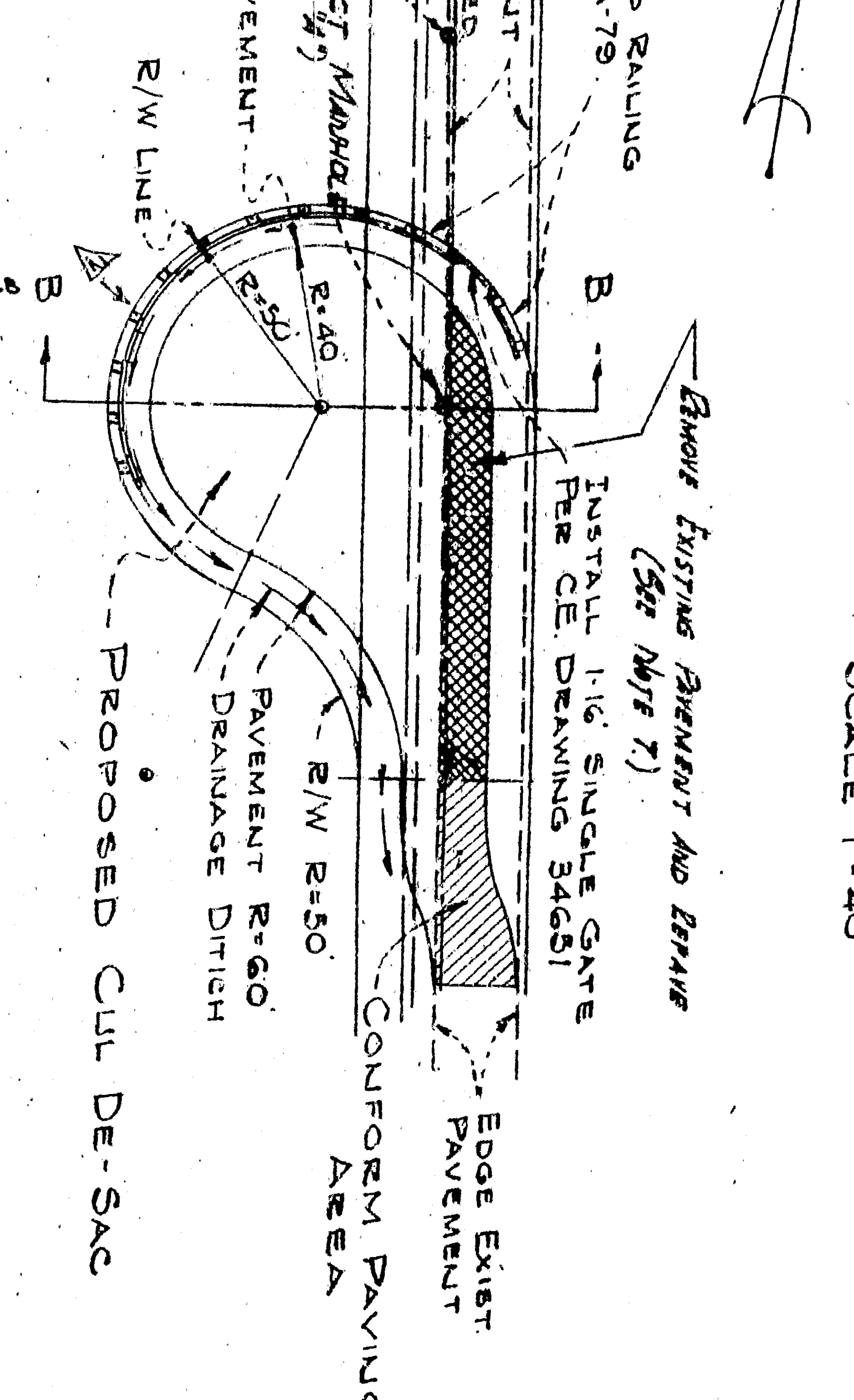
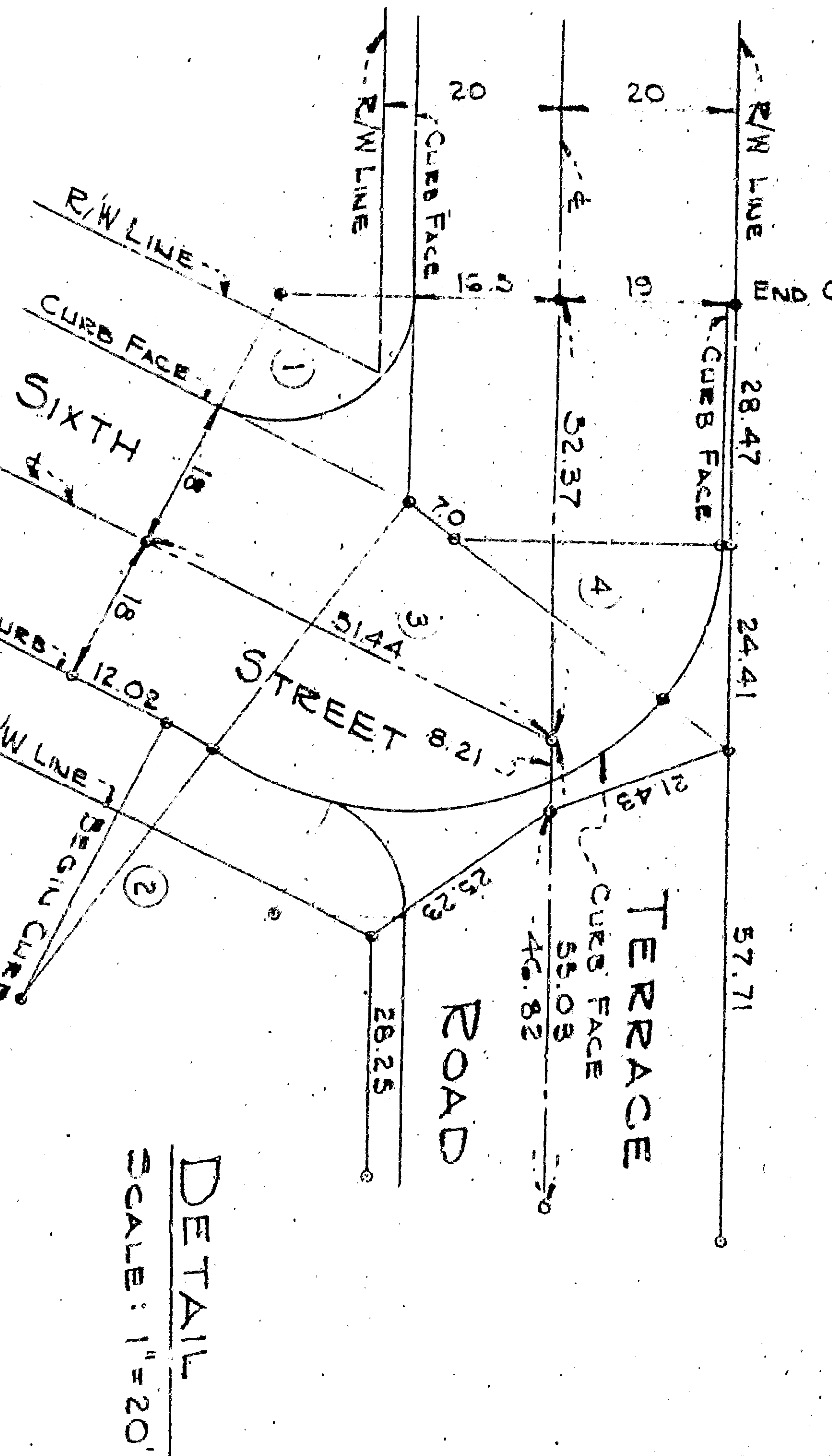


NOTE: ALL ELEVATIONS BASED ON SPOT DATUM
 BY S. B. HENNINGER
 CIVIL ENGINEER
 1200 S. B. HENNINGER ST.
 LOS ANGELES, CALIF.

PLAN
 SCALE 1" = 40'

NO.	ANGLE	R	L	T
1	116° 17' 23"	151	5044	2414
2	83° 34' 46"	37	609	303
3	87° 30' 23"	57	156.71	35.42
4	58° 12' 48"	50	1200	1335



QUANTITIES

ITEM NO.	ITEM	QUANTITY
1.	REMOVE CURB & GUTTER	80 L.I.N. FT.
2.	REMOVE PAVING	1100 SQ. FT.
3.	GRADING	1457 CU. YDS.
4.	TYPE "B" CURB & GUTTER	395 CU. YDS.
5.	ASPHALT CONCRETE	22 TONS
6.	CONFORM PAVING	270 L.I.N. FT.
7.	METAL BEAM GUARD RAIL	8 EACH
8.	METAL BEAM GUARD RAIL TERMINAL SECTIONS	1 EACH
9.	CATCH BASIN "B"	1 EACH
10.	36" CORRUGATED METAL PIPE (16 GAGES)	60 L.I.N. FT.

- FOR RENTAL BEAM GUARD RAILING DETAILS SEE STATE STANDARD DRAWING A-77.
- FOR CATCH BASIN NEW DETAILS AT 6TH STREET & TERRACE ROAD SEE CITY OF SAN BERNARDINO DRAWING NUMBER 2201. TYPE "B" GUTTER DETAIL WITH 2" CURB OPENING LENGTH 4' 10" (SEE CITY OF SAN BERNARDINO DRAWING NUMBER 2321-A).
- FOR CURB & GUTTER AND CROSS GUTTER DETAILS SEE CITY OF SAN BERNARDINO DRAWING NUMBER 2321-A.
- FOR GATE DETAILS ON TERRACE ROAD SEE C.E. DRAWING NO. 34651, SHEET 2 OF 2.
- SEWER CONSTRUCTION TO BE COMPLETED PRIOR TO COMMENCEMENT OF PAVING. (SEE C.E. DRAWING 34657, SHEETS 1-5).
- MANHOLE COVERS TO BE ADJUSTED TO GRADE AFTER COMPLETION OF PAVING.
- REMOVE EXISTING PAVEMENT, CURB AND ROLL EXISTING BASE AND REPAVE WITH 2" A. C.
- CONFORM PAVING (AVERAGE DEPTH 1") TO BE DETERMINED IN THE FIELD BY THE ENGINEER.
- DEATH PILES, CATCH BASINS, CURBS & GUTTERS, AND ALL PAVING AT INTERSECTION OF FOOTHILL BOULEVARD AND MARY STREET EXTENSION TO BE DONE IN CONNECTION WITH CONSTRUCTION OF "B" BASIN OPENING.
- PRIOR TO PERFORMING ANY GRADING CONTRACTOR WILL CLEAR AND DISPOSE OF ALL TREES, STUMPS, BRUSH, ROOTS, VEGETATION, LOGS, DEBRIS AND OTHER OBSTRUCTIONABLE MATERIALS FROM THE LIMITS OF THE CONSTRUCTION.

GENERAL NOTES

1. FOR RENTAL BEAM GUARD RAILING DETAILS SEE STATE STANDARD DRAWING A-77.

2. FOR CATCH BASIN NEW DETAILS AT 6TH STREET & TERRACE ROAD SEE CITY OF SAN BERNARDINO DRAWING NUMBER 2201. TYPE "B" GUTTER DETAIL WITH 2" CURB OPENING LENGTH 4' 10" (SEE CITY OF SAN BERNARDINO DRAWING NUMBER 2321-A).

3. FOR CURB & GUTTER AND CROSS GUTTER DETAILS SEE CITY OF SAN BERNARDINO DRAWING NUMBER 2321-A.

4. FOR GATE DETAILS ON TERRACE ROAD SEE C.E. DRAWING NO. 34651, SHEET 2 OF 2.

5. SEWER CONSTRUCTION TO BE COMPLETED PRIOR TO COMMENCEMENT OF PAVING. (SEE C.E. DRAWING 34657, SHEETS 1-5).

6. MANHOLE COVERS TO BE ADJUSTED TO GRADE AFTER COMPLETION OF PAVING.

7. REMOVE EXISTING PAVEMENT, CURB AND ROLL EXISTING BASE AND REPAVE WITH 2" A. C.

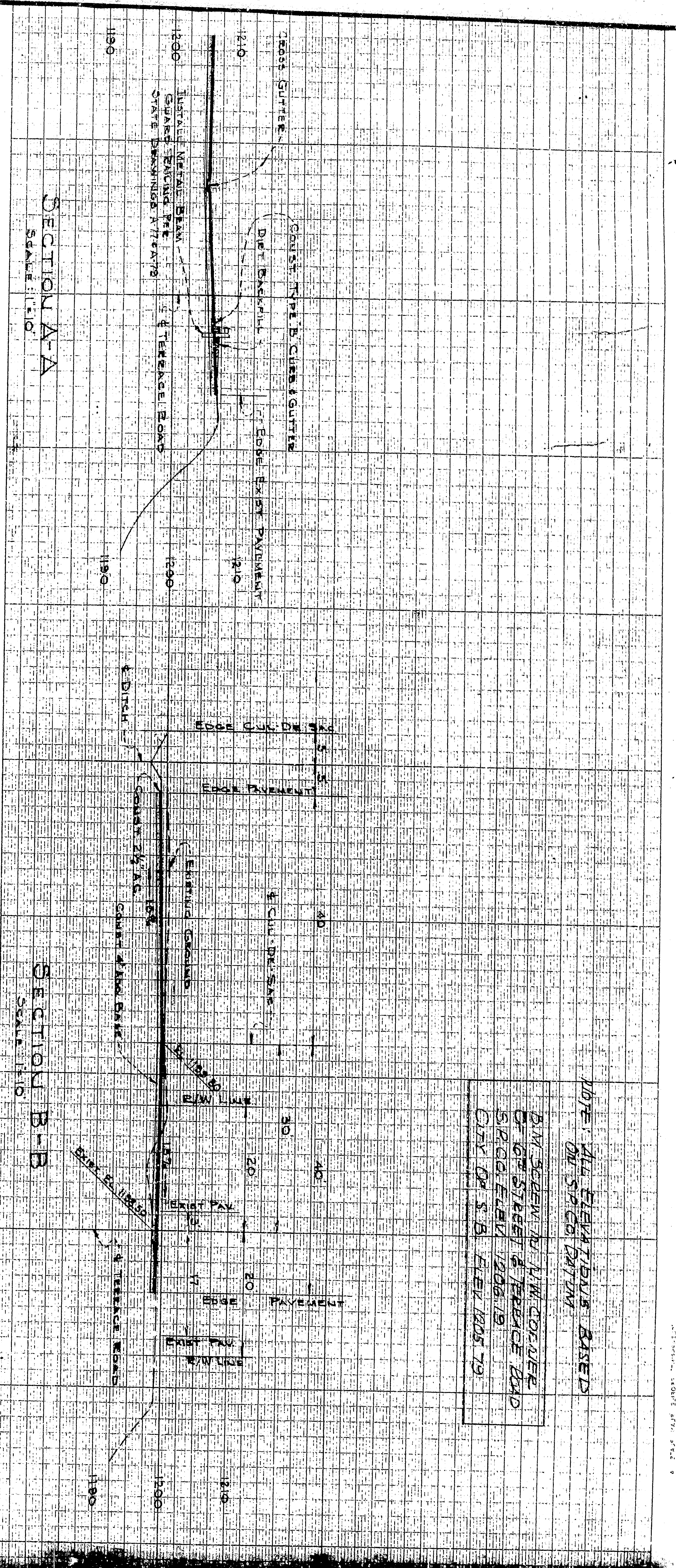
8. CONFORM PAVING (AVERAGE DEPTH 1") TO BE DETERMINED IN THE FIELD BY THE ENGINEER.

9. DEATH PILES, CATCH BASINS, CURBS & GUTTERS, AND ALL PAVING AT INTERSECTION OF FOOTHILL BOULEVARD AND MARY STREET EXTENSION TO BE DONE IN CONNECTION WITH CONSTRUCTION OF "B" BASIN OPENING.

10. PRIOR TO PERFORMING ANY GRADING CONTRACTOR WILL CLEAR AND DISPOSE OF ALL TREES, STUMPS, BRUSH, ROOTS, VEGETATION, LOGS, DEBRIS AND OTHER OBSTRUCTIONABLE MATERIALS FROM THE LIMITS OF THE CONSTRUCTION.

SOUTHERN PACIFIC COMPANY
 PALMDALE-COLTON CUT OFF
 EXTENSION OF MACY STREET
 AND CLOSING OF TERRACE ROAD
 SCALE: AS SHOWN
 JANUARY 12, 1966
 REV. MARCH 24, 1966
 SHEET NO. 1

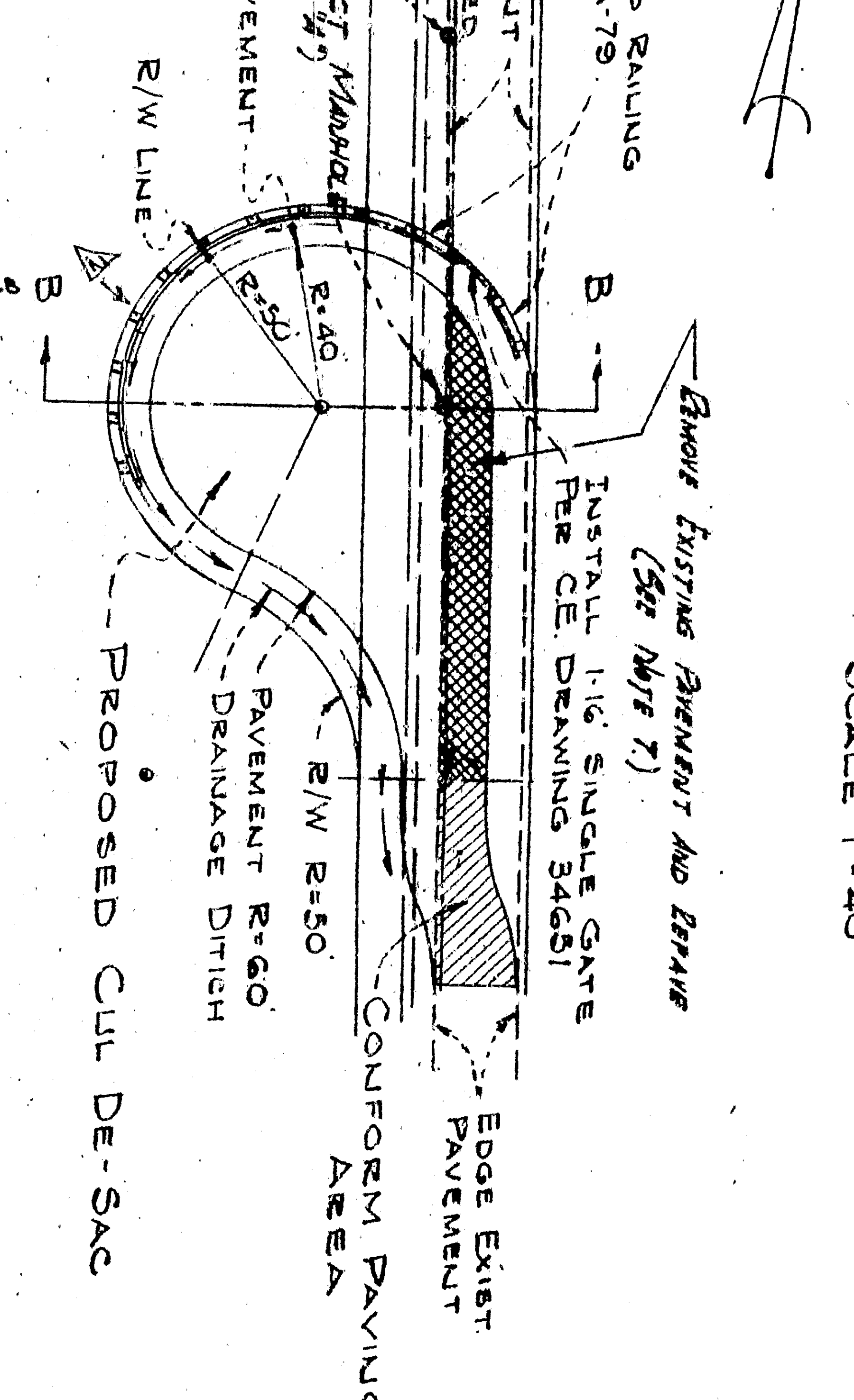
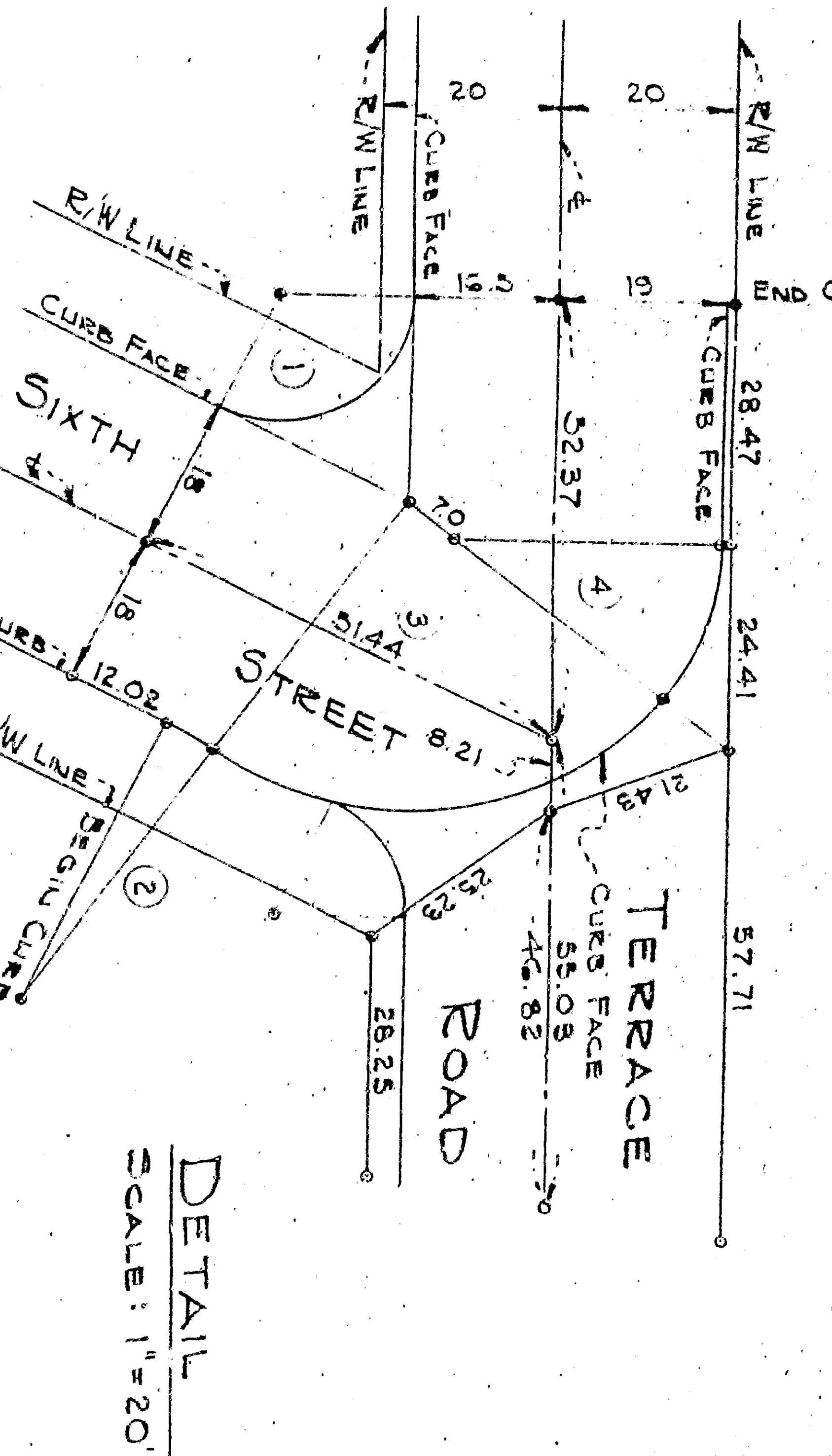
NO.	REVISION	DATE
1	APPROVED	APRIL 7, 1965
2	APPROVED	APRIL 7, 1965



NOTE: ALL ELEVATIONS BASED ON SPOT DATUM
 BY S. B. HENNINGER
 CIVIL ENGINEER
 1200 S. B. HENNINGER ST.
 LOS ANGELES, CALIF.

PLAN
 SCALE 1" = 40'

NO.	ANGLE	R	L	T
1	116° 17' 23"	151	5044	2414
2	83° 34' 46"	37	609	303
3	87° 30' 23"	57	154.71	35.42
4	58° 12' 48"	50	1200	1335



QUANTITIES

ITEM NO.	ITEM	QUANTITY
1.	REMOVE CURB & GUTTER	80 L.N.F.T.
2.	REMOVE PAVING	1100 SQ. FT.
3.	GRADING	1455 CU. YDS.
4.	TYPE "B" CURB & GUTTER	395 CU. YDS.
5.	ASPHALT CONCRETE	22 TONS
6.	CONFORM PAVING	270 L.N.F.T.
7.	METAL BEAM GUARD RAIL	8 EACH
8.	METAL BEAM GUARD RAIL TERMINAL SECTIONS	1 EACH
9.	CATCH BASIN "B"	1 EACH
10.	36" CORRUGATED METAL PIPE (16 GAGES)	60 L.N.F.T.

- FOR RENT SIGN GUARD RAILING DETAILS SEE STATE STANDARD DRAWING A-77.
- FOR CATCH BASIN NEW DETAILS AT 6TH STREET & TERRACE ROAD SEE CITY OF SAN BERNARDINO DRAWING NUMBER 2201. TYPE "B" GUTTER DETAIL WITH 12" CURB OPENING LENGTH 4' 10" (SEE PLAN) T = 10" V = 10' G = 6' K = 3'-0".
- FOR CURB & GUTTER AND CROSS GUTTER DETAILS SEE CITY OF SAN BERNARDINO DRAWING NUMBER 2321-A.
- FOR GATE DETAILS ON TERRACE ROAD SEE C.E. DRAWING NO. 34651, SHEET 2 OF 2.
- SEWER CONSTRUCTION TO BE COMPLETED PRIOR TO COMMENCEMENT OF PAVING. (SEE C.E. DRAWING 34657, SHEETS 1-5).
- MANHOLE COVERS TO BE ADJUSTED TO GRADE AFTER COMPLETION OF PAVING.
- REMOVE EXISTING PAVEMENT, GRADE AND ROLL EXISTING BASE AND REPAVE WITH 2 1/2" A. C.
- CONFORM PAVING (AVERAGE DEPTH 1 1/2") TO BE DETERMINED IN THE FIELD BY THE ENGINEER.
- DEATH PILES, CATCH BASINS, CURBS & GUTTERS, AND ALL PAVING AT INTERSECTION OF FOOTBALL BOULEVARD AND MARY STREET EXTENSION TO BE DONE IN CONNECTION WITH CONSTRUCTION OF "B" BASIN OPENING.
- PRIOR TO PERFORMING ANY GRADING CONTRACTOR WILL CLEAR AND DISPOSE OF ALL TREES, STUMPS, BRUSH, ROOTS, VEGETATION, LOGS, DEBRIS AND OTHER OBSTRUCTIONABLE MATERIALS FROM THE LIMITS OF THE CONSTRUCTION.

GENERAL NOTES

SOUTHERN PACIFIC COMPANY
 PALMDALE-COLTON CUT OFF
 EXTENSION OF MACY STREET
 AND CLOSING OF TERRACE ROAD
 SCALE: AS SHOWN
 JANUARY 12, 1966
 REV. MARCH 24, 1966
 DRAWING 34652
 SHEET NO. 1